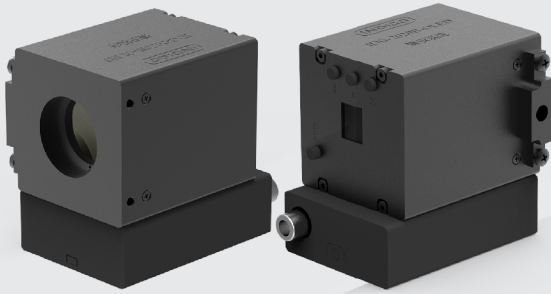


4MP BSI OLED Camera

INDIGO
IMAGING



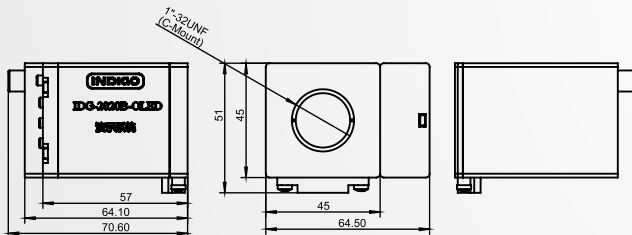
Applications

Small size embedded imaging components for low light level
Star level detection and microscopy applications

Advantages

- Back-thinned sCMOS
- QE up to 95%@560nm
- Very low readout noise: 1.5e-
- 2048 x 2048 Resolution
- High dynamic range up to 93dB
- Small size design to meet space embedded requirements

Dimensions



Specification

Product model	IDG-400B-M-R-OLED
Sensor type	BSI CMOS
Resolution	2048x2048
Sensor size	2"
Color	Monochrome
Shutter type	Rolling Shutter
Pixel size	6.5μm x 6.5μm
Quantum efficiency	95%@560nm
Readout noise	1.5e-
Full well capacity	50ke-
Dynamic range	90dB
Frame rate	25fps
Bit depth	0.0005Lux
Analog gain	8bit
Exposure model	Auto
Exposure time	0.02ms~40ms
Image processing	Auto enhancement, 2D filtering, Gamma, Auto exposure, DRC, HDR, Binning
Optical interface	C interface
Data interface	PAL/OLED
Power interface	Two 18650 batteries
Power supply	8.4V
Power consumption	<2.2W
Weight	180g
Size	45mm x 45mm x 60mm
Operating temperature	0°C~50°C
Storage temperature	0°C~70°C



Indigo-Imaging Technology Co.,Ltd. www.indigo-imaging.com

Tel: 0086-591-8358 8265-812

Email: support@indigo-imaging.com

Address: 410# JinRong building , 95# Tai Yu Road, Gaishan Town, Cangshan Area, Fuzhou, Fujian, PR CHINA